



GMT MONTHLY MEMBERSHIP PROGRESS REPORT

Results as of: 5/31/2020

GMT Constitutional Area 6, Group A

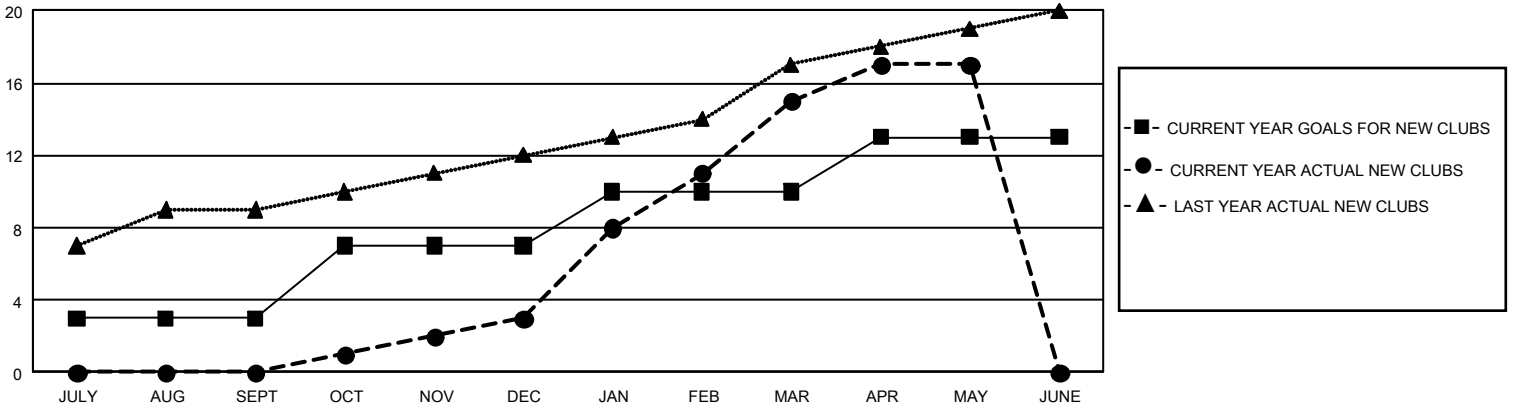
GMT: OPEN

REPORT DOES NOT INCLUDE CLUBS IN UNDISTRICTED AREAS.

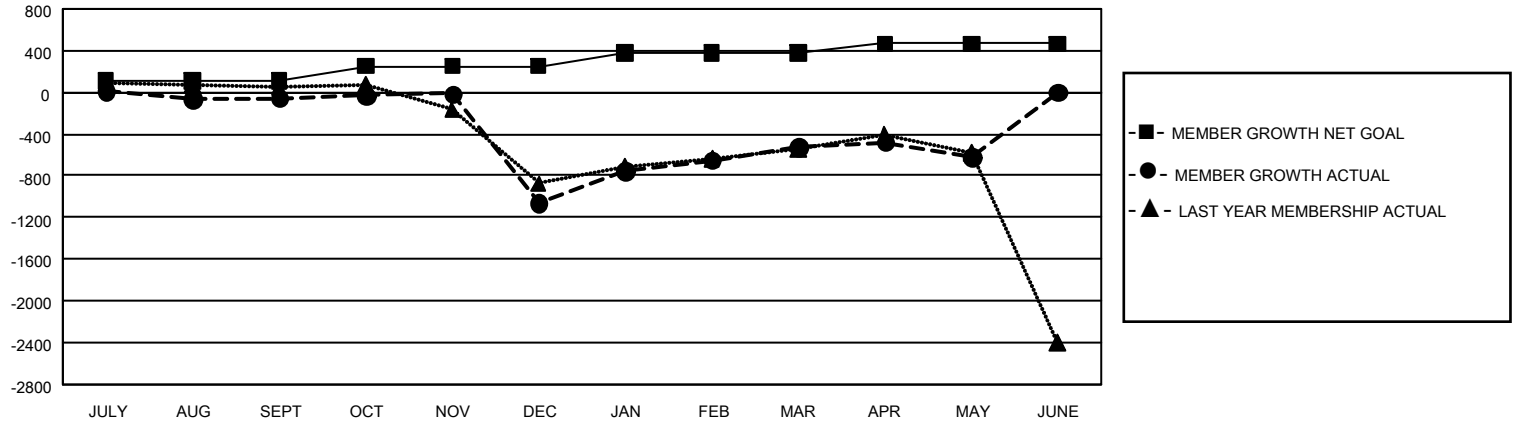
Clubs			
RESULTS FOR 2019-2020			
QUARTER	NEW CLUB GOAL	NEW CLUBS	DROPPED CLUBS
JULY/AUG/SEPT	9	0	11
OCT/NOV/DEC	12	3	32
JAN/FEB/MAR	9	12	4
APR/MAY/JUNE	9	2	0

Members			
RESULTS FOR 2019-2020			
QUARTER	MEMBER GROWTH NET GOAL	MEMBER GROWTH ACTUAL	DROPPED MEMBERS ACTUAL (including transfers)
JULY/AUG/SEPT	327	283	294
OCT/NOV/DEC	423	267	1,236
JAN/FEB/MAR	384	787	140
APR/MAY/JUNE	264	146	220

GOALS AND ACTUAL NEW CLUBS CUMULATIVE



GOALS AND ACTUAL MEMBERS CUMULATIVE



DROPPED CLUBS: 47	156 CLUBS OF 331 ADDED 1 OR MORE NEW MEMBERS	GENDER DISTRIBUTION MALE 5,546 (78.53%) FEMALE 1,516 (21.47%)
DROPPED MEMBERS DECEASED 11 CLUB CANCELLED 899 OTHER 981 <hr/> TOTAL 1,891	CLICK HERE FOR CUMULATIVE MEMBERSHIP DATA	TOTAL FAMILY UNIT MEMBERS 5,246 FAMILY MEMBERS PAYING HALF DUES 3,903